



ST. TAMMANY PARISH

PATRICIA P. BRISTER
PARISH PRESIDENT

April 17, 2019

Please find the following addendum to the below mentioned BID.

Addendum No.: 2

Bid#: 19-20-2

Project Name: Utilities Pumps

Bid Due Date: Wednesday, April 24, 2019

GENERAL INFORMATION:

1. The Gorman Rupp 6" x 6" Self Priming Centrifugal Pump is an approved equal for UTPUMP-01. The product information sheets are attached.
2. The Gresco 6" x 6" Model XT-6 Self Priming Pump is an approved equal for UTPUMP-01. The product information sheets are attached.

ATTACHMENTS:

1. Gorman Rupp 6"x 6" Self Priming Centrifugal Pump.pdf
2. Gresco 6" x 6" Model XT-6 Self Priming Pump.pdf

<< End of Addendum # 2 >>

DS

Self Priming Centrifugal Pump

**Super
T SERIES**

VARIOUS PATENTS APPLY

Model T6A3S-B**Size 6" x 6"****PUMP SPECIFICATIONS****Size:** 6" x 6" (152 mm x 152 mm) NPT - Female.**Casing:** Gray Iron 30.

Maximum Operating Pressure 79 psi (545 kPa).*

Semi-Open Type, Two Vane Impeller: Ductile Iron 65-45-12.

Handles 3" (76.2 mm) Diameter Spherical Solids.

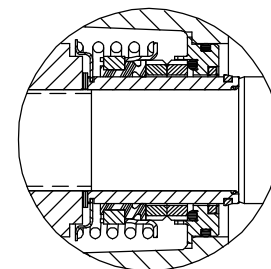
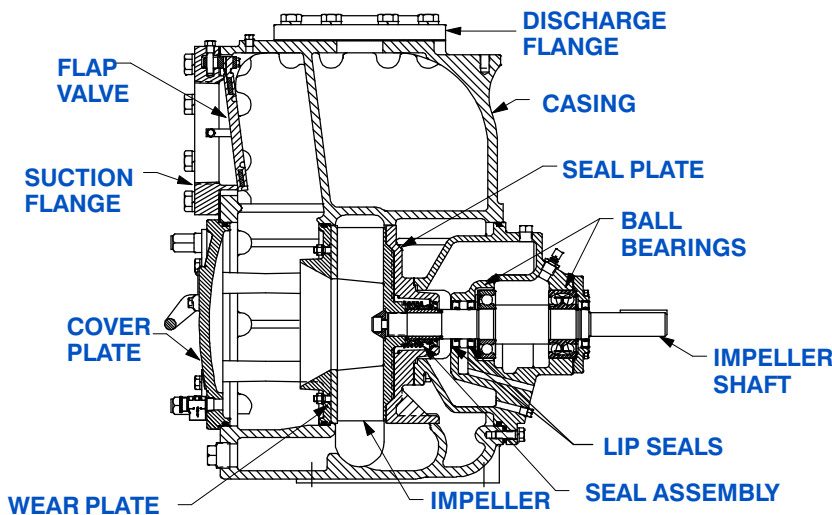
Impeller Shaft: Alloy Steel 4150.**Shaft Sleeve:** Alloy Steel 4130.**Replaceable Wear Plate:** Carbon Steel 1026.**Removable Adjustable Cover Plate:** Gray Iron 30; 62 lbs. (28 kg).**Flap Valve:** Neoprene w/Nylon and Steel Reinforcing.**Seal Plate:** Gray Iron 30.**Bearing Housing:** Gray Iron 30.**Radial Bearing:** Open Single Row Ball.**Thrust Bearing:** Open Double Row Ball.**Bearing and Seal Cavity Lubrication:** SAE 30 Non-Detergent Oil.**Flanges:** Gray Iron 30.**Gaskets:** Buna-N, Compressed Synthetic Fibers, PTFE, Vegetable Fiber, Cork, and Rubber.**O-Rings:** Buna-N.**Hardware:** Standard Plated Steel.**Brass Pressure Relief Valve.****Bearing and Seal Cavity Oil Level Sight Gauges.****Optional Equipment:** Metal Bellows Seal. Automatic Air

Release Valve. 120V/240V Casing Heater. High Pump

Temperature Shutdown Kit. G-R Hard Iron Casing.

Self-Cleaning Wear Plate.

Gray Iron 30 Suction and Discharge Spool Flanges:

6" ASA (**Specify Model T6A3S-B /F**).150 mm DIN 2527 (PN16) (**Specify Model T6A3S-B /FM**).***Consult Factory for Applications Exceeding
Maximum Pressure and/or Temperature Indicated.****Shown with Optional Suction & Discharge
Spool Flanges (Available in ASA or DIN
Standard Sizes).****SEAL DETAIL**

Cartridge Type, Mechanical, Oil-Lubricated, Double Floating, Self-Aligning. Tungsten Titanium Carbide Rotating and Stationary Faces. Stainless Steel 316 Stationary Seat. Fluorocarbon Elastomers (DuPont Viton® or Equivalent). Stainless Steel 18-8 Cage and Spring. Maximum Temperature of Liquid Pumped, 160°F (71°C).*

**THE GORMAN-RUPP COMPANY • MANSFIELD, OHIO**

GORMAN-RUPP OF CANADA LIMITED • ST. THOMAS, ONTARIO, CANADA

www.grpumps.com

Specifications Subject to Change Without Notice

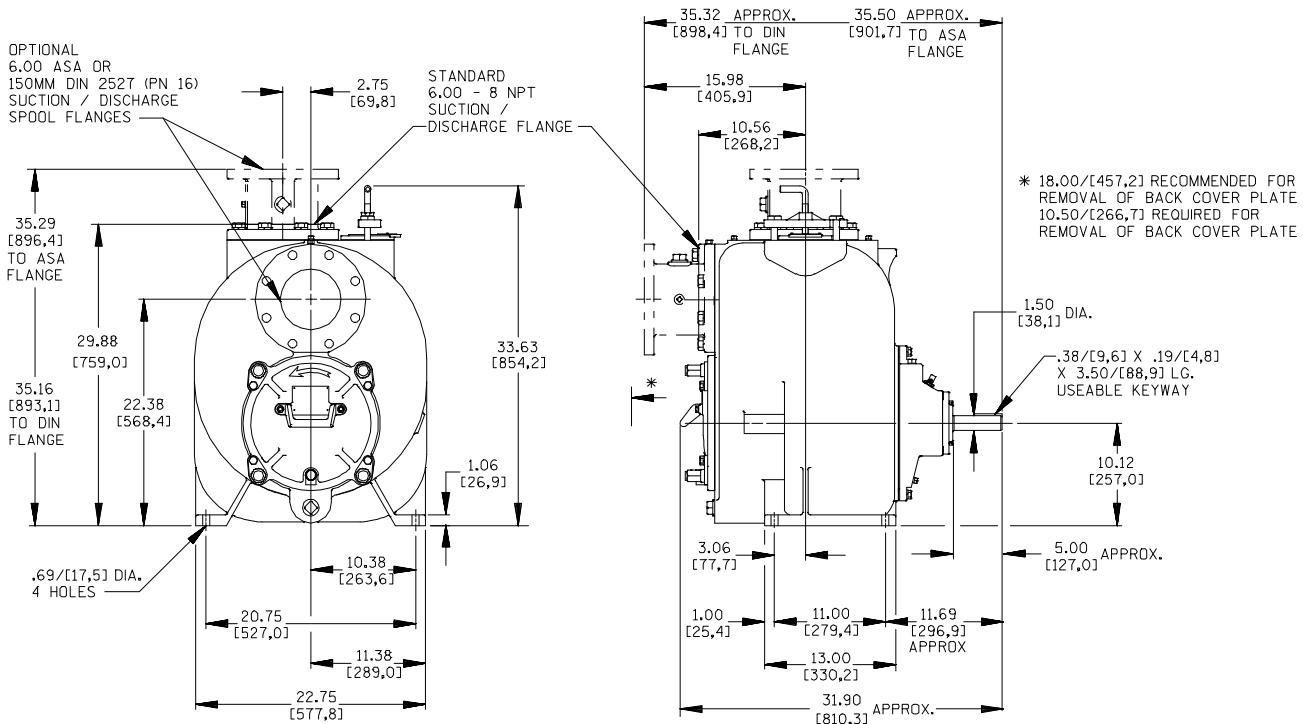
Printed in U.S.A.

Specification Data

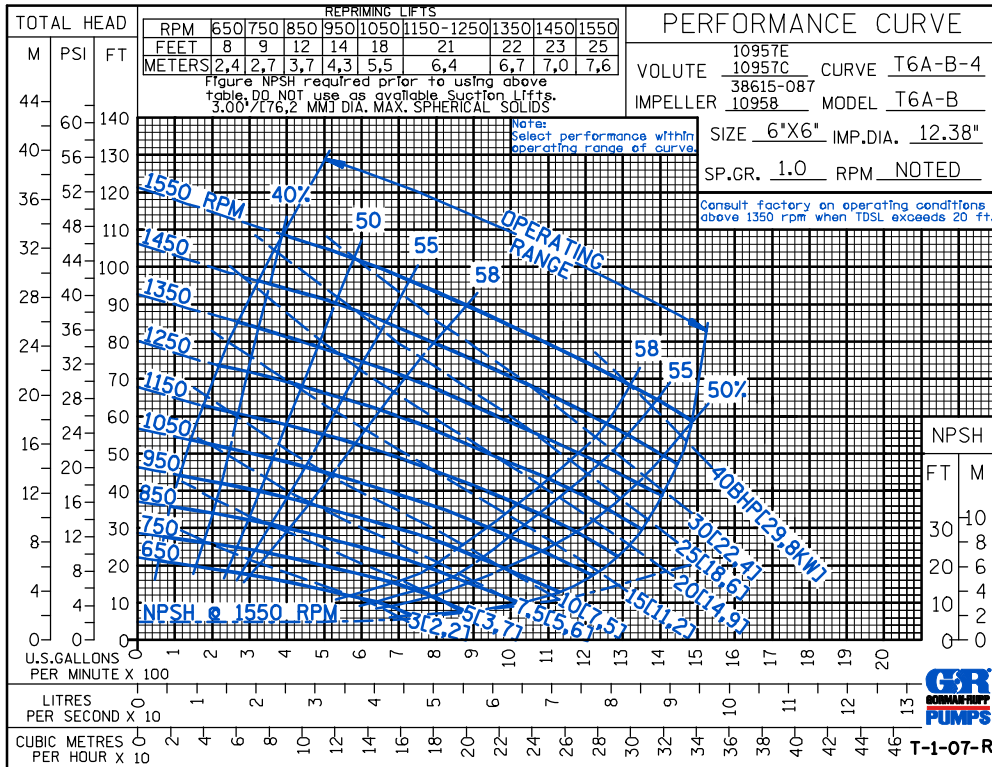
APPROXIMATE DIMENSIONS and WEIGHTS

NET WEIGHT: 855 LBS. (388 KG.)*
SHIPPING WEIGHT: 910 LBS. (413 KG.)*
EXPORT CRATE: 32.5 CU. FT. (0,92 CU. M.)
***ADD 25 LBS. (11,3 KG.) W/EACH SPOOL FLANGE**

SECTION 55, PAGE 2200



OPTIONAL ASA OR DIN STANDARD SUCTION & DISCHARGE SPOOL FLANGES AVAILABLE

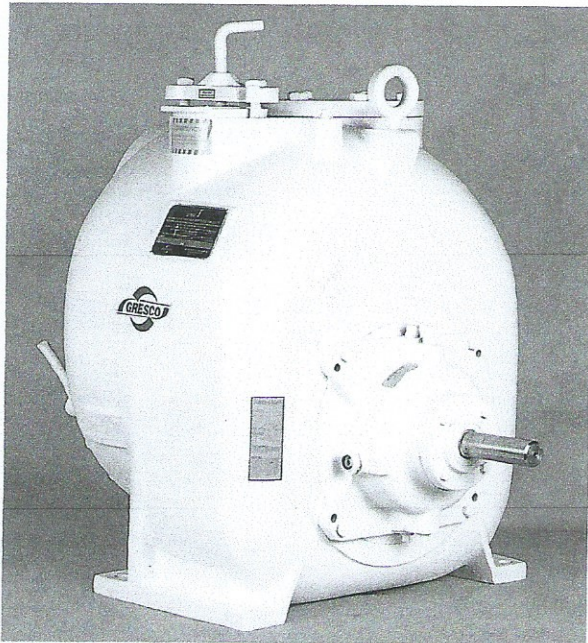


THE GORMAN-RUPP COMPANY • MANSFIELD, OHIO

GORMAN-RUPP OF CANADA LIMITED • ST. THOMAS, ONTARIO, CANADA

Specifications Subject to Change Without Notice

Printed in U.S.A.



DATA SHEET

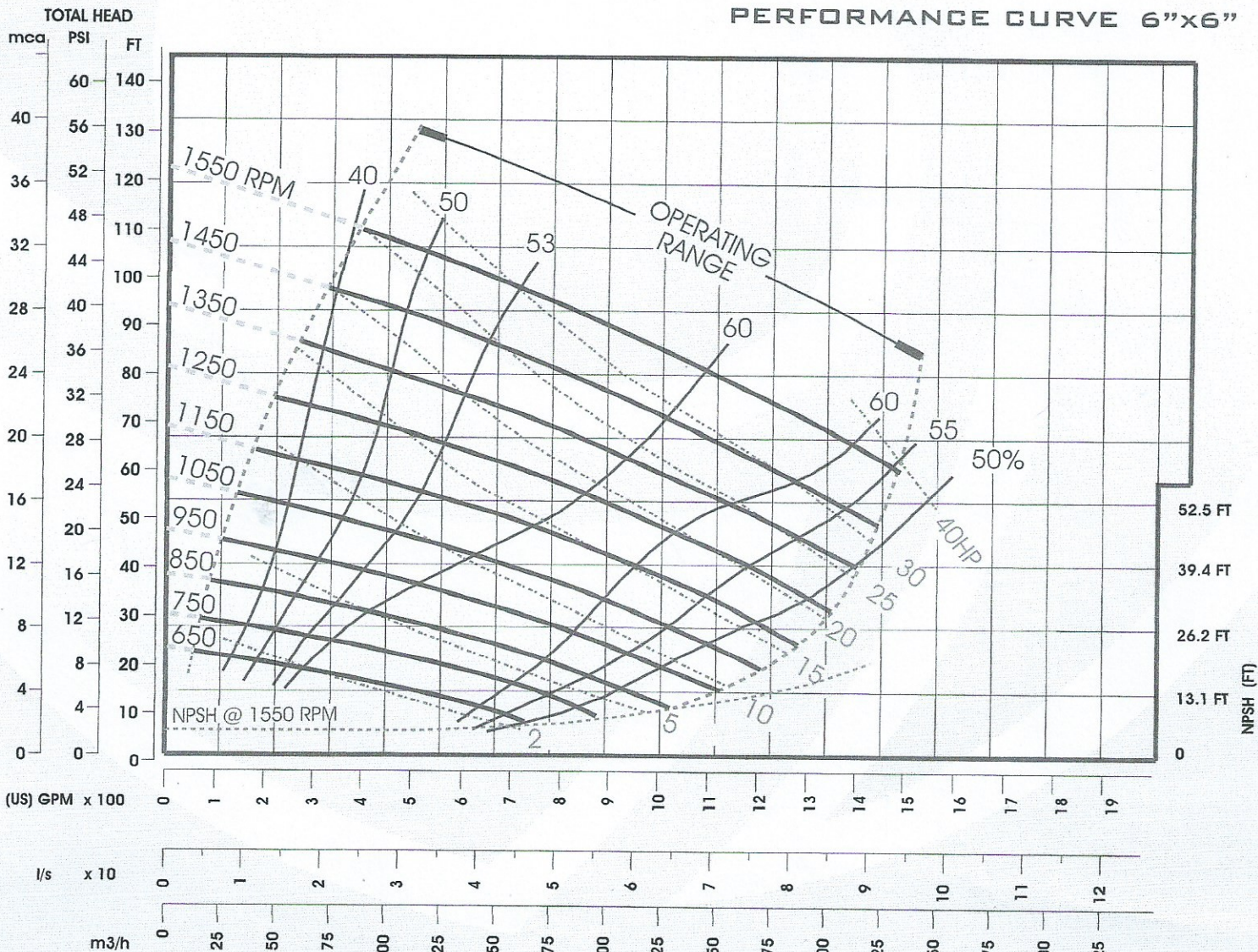
NET WEIGHT 364kg (802lbs)
SHIPPING WEIGHTS 391kg (862lbs)
IMPELLER DIA. 314,32mm (12.3/8")
R.P.M. FROM 650rpm TO 1550rpm
MAX. SOLIDS 76,2mm (3")

SELF-PRIMING

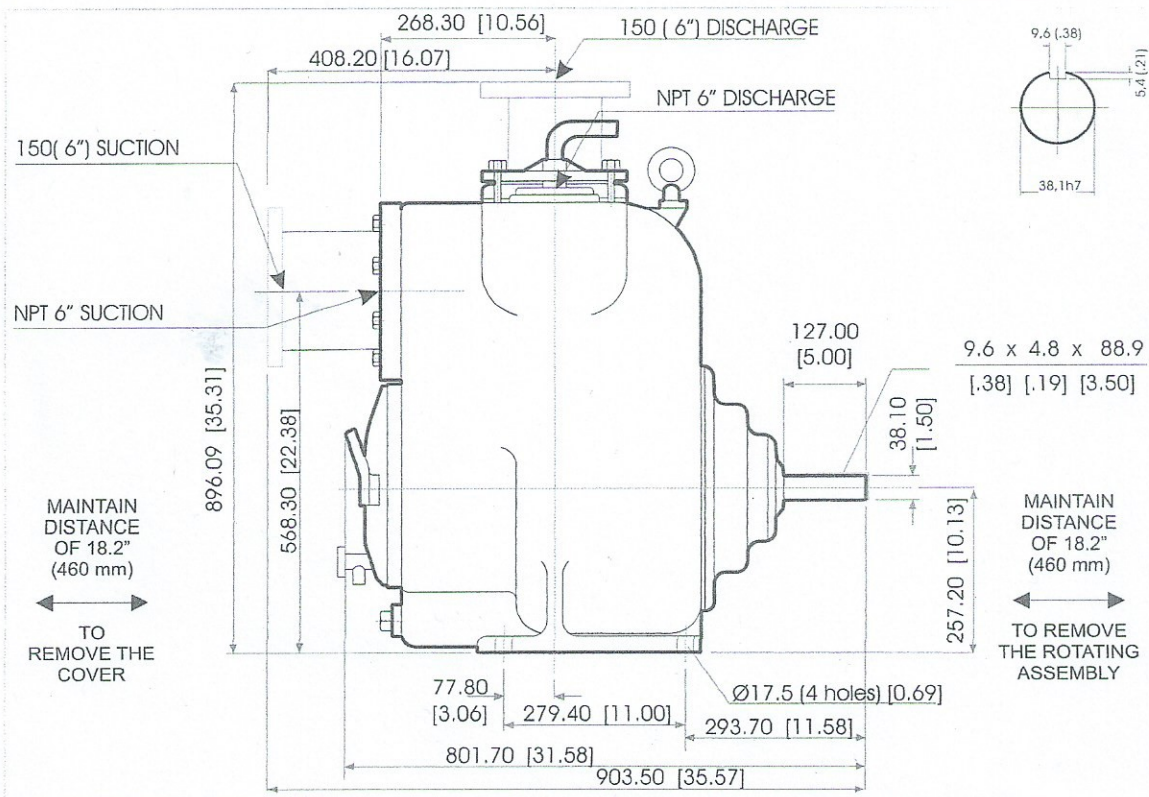
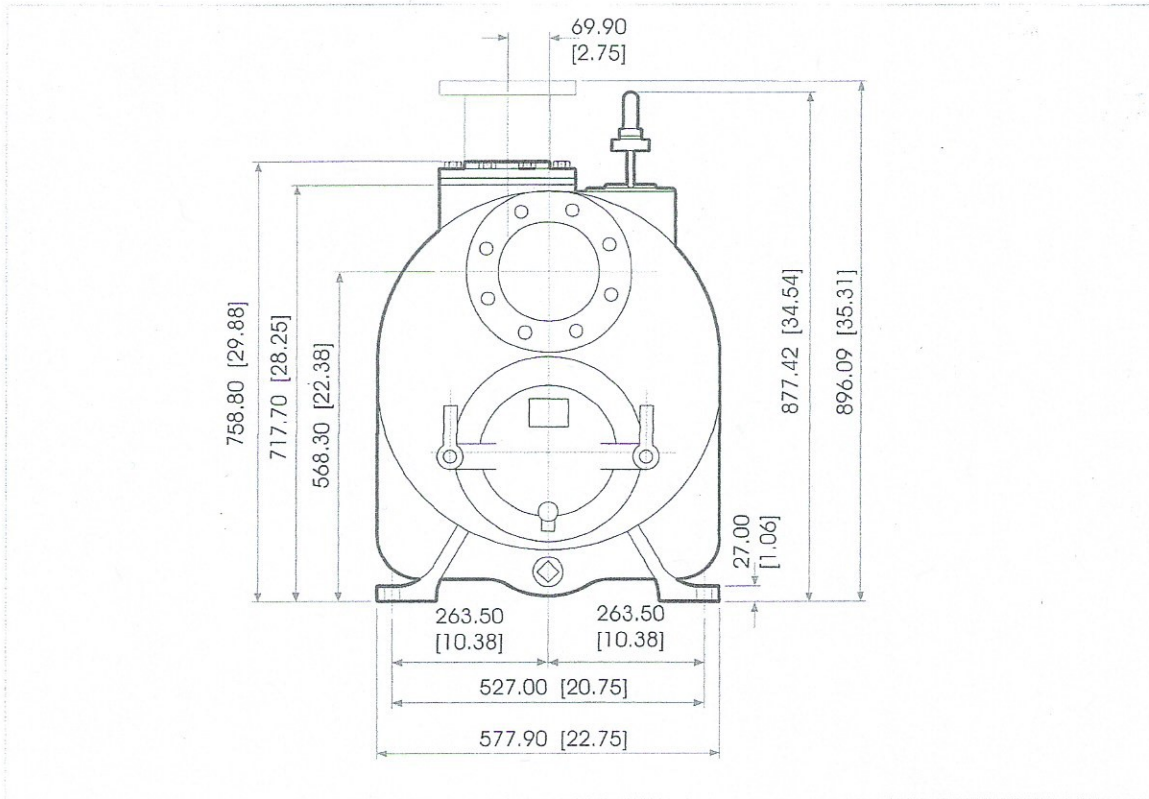
650 RPM 2,4m (8ft) - 750 RPM 2,7m (9ft)
 850 RPM 3,6m (12ft) - 950 RPM 4,2m (14ft)
 1050 RPM 5,5m (18ft) - 1150 RPM 6,4m (21ft)
 1250 RPM 6,4m (21ft) - 1350 RPM 6,7m (22ft)
 1450 RPM 7,0m (23ft) - 1550 RPM 7,6m (25ft)

BEFORE USING THIS TABLE, CHECK THE NPSH.

PERFORMANCE CURVE 6"x6"



EXTERNAL DIMENSIONS MILLIMETERS (INCHES)





CONSTRUCTION MATERIALS

	STANDARD	TYPE A	TYPE B	TYPE C	TYPE D	TYPE E	TYPE F	TYPE G
CASING	A 48CL30					CD4 MCU	SS 316	ADI
IMPELLER	A 60-40-18	A 216	CD4 MCU	SS 316	ADI	CD4 MCU	SS 316	ADI
WEAR PLATE	SAE 1020	A 216	CD4 MCU	SS 316	ADI	CD4 MCU	SS 316	ADI
COVER PLATE	A 48CL30	A 216	CD4 MCU	SS 316	ADI	CD4 MCU	SS 316	ADI
BEARING HOUSING	A 48CL30					CD4 MCU	SS 316	ADI
SEAL PLATE	A 48CL30	A 216	CD4 MCU	SS 316	ADI	CD4 MCU	SS 316	ADI
FLAP VALVE	Neoprene					Viton		
SLEEVE SHAFT	ANSI 4140HT	ANSI 17-4						
FLANGE	A 48CL30				ADI	SS 316	SS 316	ADI
O'RINGS	Buna		Viton					
IMPELLER SHAFT	ANSI 4140HT	ANSI 17-4						
MECHANICAL SEAL	Casing in SS 316, O' rings in Buna & Viton, faces in titanium and tungsten carbide							

THE MECHANICAL SEAL FOR ALL MODELS HAS A 316SS BODY, VITON O' RINGS AND TUNGSTEN CARBIDE FACES. OTHER SEALS AVAILABLE UPON REQUEST.

ALL CAST IRON PARTS ARE ASTM 48, CLASS 30.

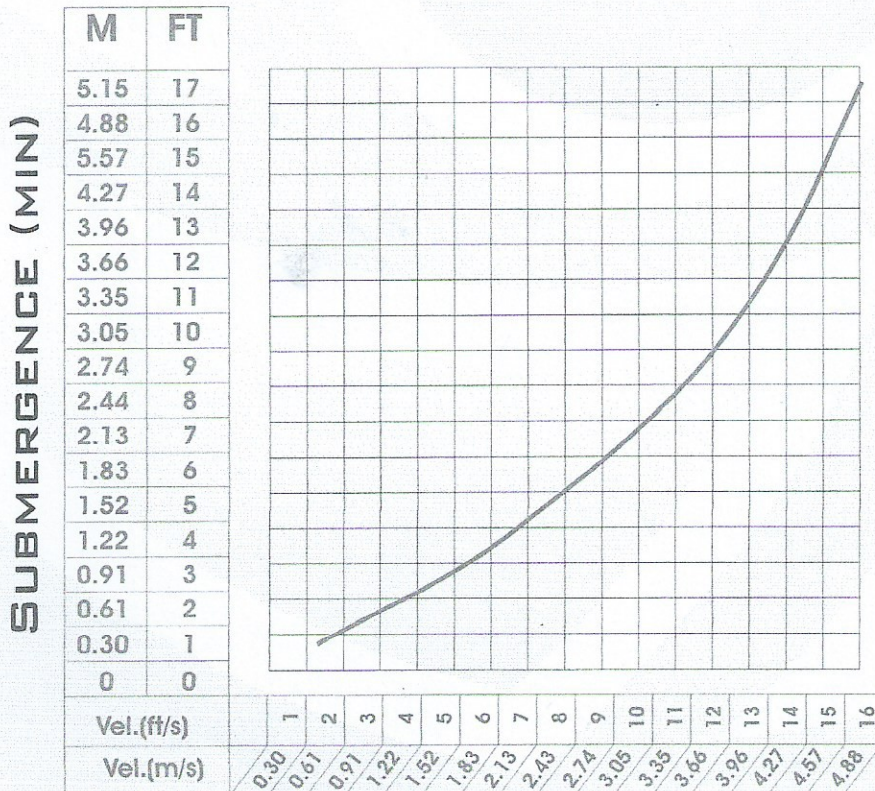
ALL CARBON STEEL SHAFTS ARE SAE 4140 HT

ALL PARTS LABELED CD4 ARE HARDENED 18-8 STAINLESS STEEL, CD4, DIN 1-4463

ALL PARTS LABELED 316SS ARE CF8M

EPOXY AND CERAMIC INTERNAL COATINGS ARE AVAILABLE. PLEASE CALL FOR QUOTE.

SUCTION SPEED FLOW CURVE

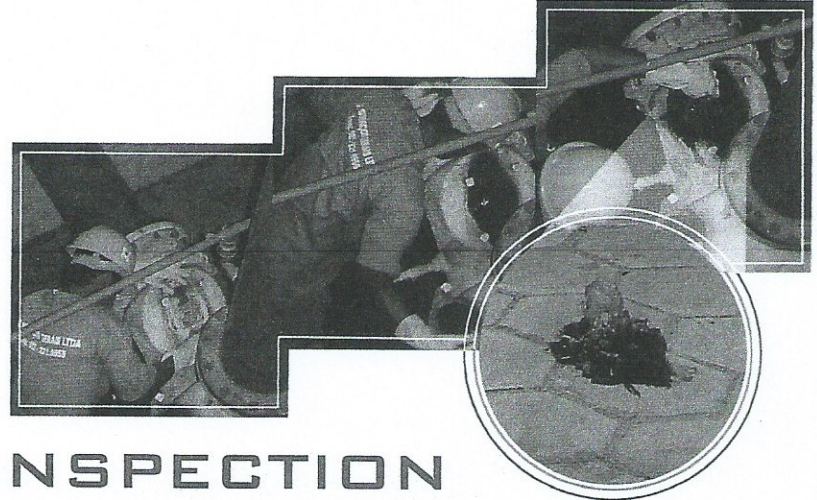


NOTE 1: THE SUGGESTED SUCTION SHOULD HAVE THE SAME NOMINAL DIAMETER AS THE PUMP, SO THAT THE SOLIDS WILL BE TOTALLY SWEEPED UP.

2: IF THE SPEED IS HIGHER THAN 3.5 M/S AND IF THERE IS A NEED FOR HIGHER "NPSH", PLEASE CONTACT THE FACTORY.

QUICK AND SIMPLE MAINTENANCE

ROUTINE MAINTENANCE SERVICES ARE CARRIED OUT QUICKLY AND EASILY WITH THE USE OF REGULAR TOOLS, THUS ECONOMIZING TIME AND LABOR.

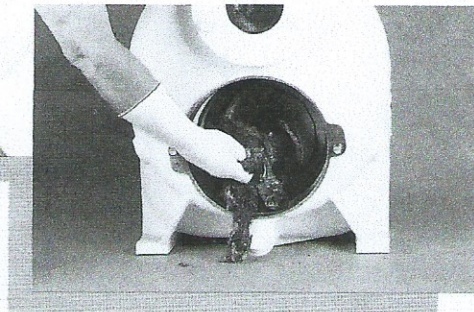
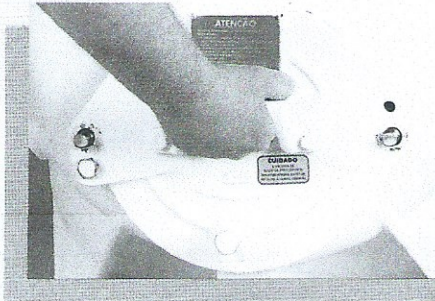


CLEANING AND INSPECTION

WITHOUT DISCONNECTING THE PIPEWORK (BACK - PULL - OUT)

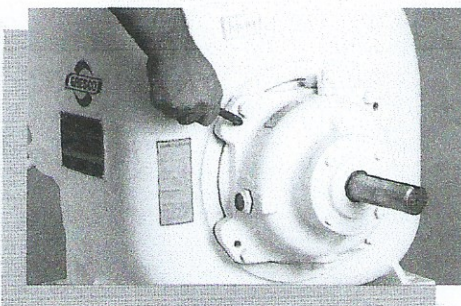
ANOTHER ADVANTAGE OF THE GRESKO PUMP IS THAT CLEANING AND CLEARING ARE SIMPLE TASKS AS ARE INSPECTION AND SUBSTITUTION OF THE IMPELLER AND SEAL, WHEN NECESSARY.

THE T AND U PUMPS WERE ESPECIALLY DESIGNED FOR QUICK CLEANING BEFORE RETURNING TO OPERATION.

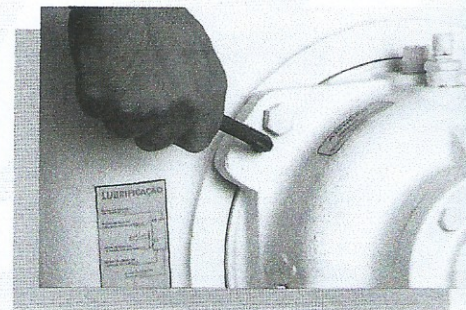


EVEN DURING PREVENTIVE MAINTENANCE, INTERNAL INSPECTION CAN BE CARRIED OUT QUICKLY AND SAFELY. TO DO THIS, ALL THAT HAS TO BE DONE IS TO UNSCREW AND LIFT THE HANDLES OF THE INSPECTION COVER, AND THEN PERFORM THE CLEANING OPERATION, WITHOUT REMOVING THE CASING NOR DISCONNECTING THE PIPEWORK.

SHIMLESS EXTERNAL IMPELLER ADJUSTMENT



AN EXCLUSIVE SYSTEM TO EXTERNALLY ADJUST THE IMPELLER CLEARANCE WITHOUT DISASSEMBLING THE PUMP. WITH THE USE OF JUST AN ALLEN OR FIXED WRENCH, SIMPLE ADJUSTMENT CAN OPTIMIZE PUMP EFFICIENCY WHILE EXTENDING THE LIFE OF BOTH IMPELLER AND WEAR PLATE.





ST. TAMMANY PARISH

PATRICIA P. BRISTER
PARISH PRESIDENT

April 11, 2019

Please find the following addendum to the below mentioned BID.

Addendum No.: 1

Bid#: 19-20-2

Project Name: Utilities Pumps

Bid Due Date: Wednesday, April 24, 2019

GENERAL INFORMATION:

1. Please delete Pricing Bid Form and replace with Pricing Bid Form-REVISED (Attached). A self-priming centrifugal pump has been added to the bid.
2. Please add Attachment "C" specifications for the self-priming centrifugal pump to the bid (Attached).

ATTACHMENTS:

1. Pricing Bid Form-REVISED.pdf
2. Attachment "C".pdf

<< End of Addendum # 1 >>

**Utilities Pumps
Bid # 19-20-2**

Pricing Bid Form-REVISED

Bidder **must** acknowledge all addenda by entering the number the Parish assigned to **EACH** of the addenda that the Bidder is acknowledging.

The Bidder acknowledges receipt of the following: **ADDENDA:** _____.

All fields must be filled in. NO blanks will be permitted. If the item is unavailable please enter N/A.

“Price/Each” shall represent the cost for the specified item as well as any delivery charges (if applicable) to the location(s) indicated in this bid.

REF No.	MAKE & MODEL OR PRIOR APPROVED EQUAL	COST PER UNIT
UTPUMP-01	All Prime – Model #XS-6 Self-Priming Pump, 6” Suction and Discharge Full Diameter Impeller 12 3/8” (Attachment “A”)	
UTPUMP-02	National Pump Company – Model #SE6XHC 8 Stage Submersible Bowl Assembly (Attachment “B”)	
UTPUMP-03	The Gorman Rupp Company – Model #T4A3S-B/F Self Priming Centrifugal Pump Size 4”x4” (Attachment “C”)	

Company: _____

Signature: _____

Printed Name: _____

Title: _____

Address: _____

Telephone: _____

Email: _____

Date: _____

DS

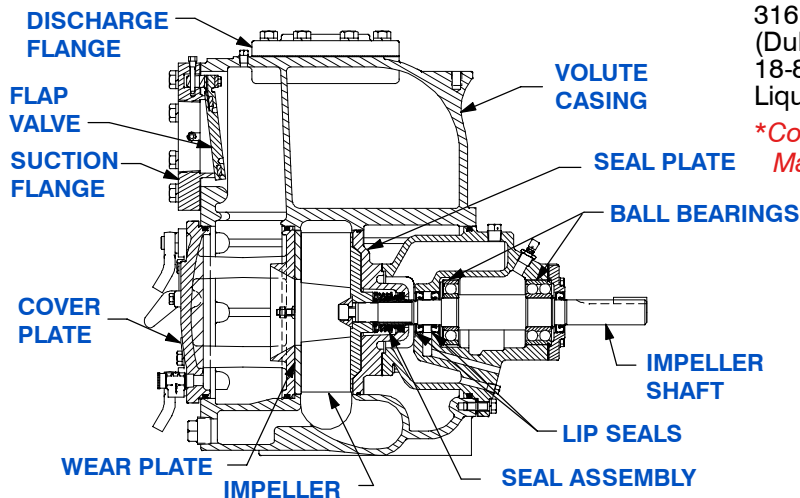
Self Priming Centrifugal Pump

**Super
T SERIES****Basic Pump
Model T4A3S-B
Size 4" x 4"****PUMP SPECIFICATIONS**

Size: 4" x 4" (101 mm x 101 mm) NPT - Female.
Pump Casing: Gray Iron No. 30. Maximum Operating Pressure 86 psi (593 kPa).
Open Type, Two Vane Impeller: Ductile Iron No. 65-45-12. Handles 3" (76,2 mm) Diameter Spherical Solids.
Impeller Shaft: Alloy Steel No. 4140.
Replaceable Wear Plate: Carbon Steel No. 1015.
Removable Adjustable Cover Plate: Gray Iron No. 30; 37 lbs. (17 kg).
Flap Valve: Neoprene w/Steel Reinforcing.
Bearing Housing: Gray Iron No. 30.
Seal Plate: Gray Iron No. 30.
Shaft Sleeve: Alloy Steel No. 4130.
Radial Bearing: Open Single Ball.
Thrust Bearing: Open Double Ball.
Bearing and Seal Cavity Lubrication: SAE No. 30 Non-Detergent Oil.
Flanges: 125# Gray Iron No. 30.
Gaskets: Buna-N, Compressed Synthetic Fibers, Vegetable Fiber, PTFE, Cork, and Rubber.
O-Rings: Buna-N.
Hardware: Standard Plated Steel.
Brass Pressure Relief Valve.
Bearing and Seal Cavity Oil Level Sight Gauges.

Optional Equipment: Automatic Air Release Valve. Metal Bellows Seal. 120V/240V Casing Heater. High Pump Temperature Shutdown Kit. Gray Iron No. 30 Suction and Discharge Spool Flanges;

4" ASA (**Specify Model T4A3S-B /F**).
 100 mm DIN 2527 (**Specify Model T4A3S-B /FM**).

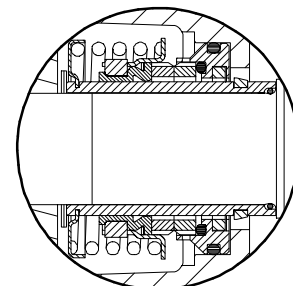


Shown with Optional Suction & Discharge Spool Flanges (Available in ASA or DIN Standard Sizes).

SEAL SPECIFICATIONS

Cartridge Type, Mechanical, Oil-Lubricated, Double Floating, Self-Aligning. Tungsten Titanium Carbide Rotating and Stationary Faces. Stainless Steel No. 316 Stationary Seat. Fluorocarbon Elastomers (DuPont Viton® or Equivalent). Stainless Steel No. 18-8 Cage and Spring. Maximum Temperature of Liquid Pumped, 160°F (71°C).*

*Consult Factory for Applications Exceeding Maximum Pressure and/or Temperature Indicated.

SEAL DETAIL**THE GORMAN-RUPP COMPANY • MANSFIELD, OHIO**

GORMAN-RUPP OF CANADA LIMITED • ST. THOMAS, ONTARIO, CANADA

www.gormanrupp.com

Specifications Subject to Change Without Notice

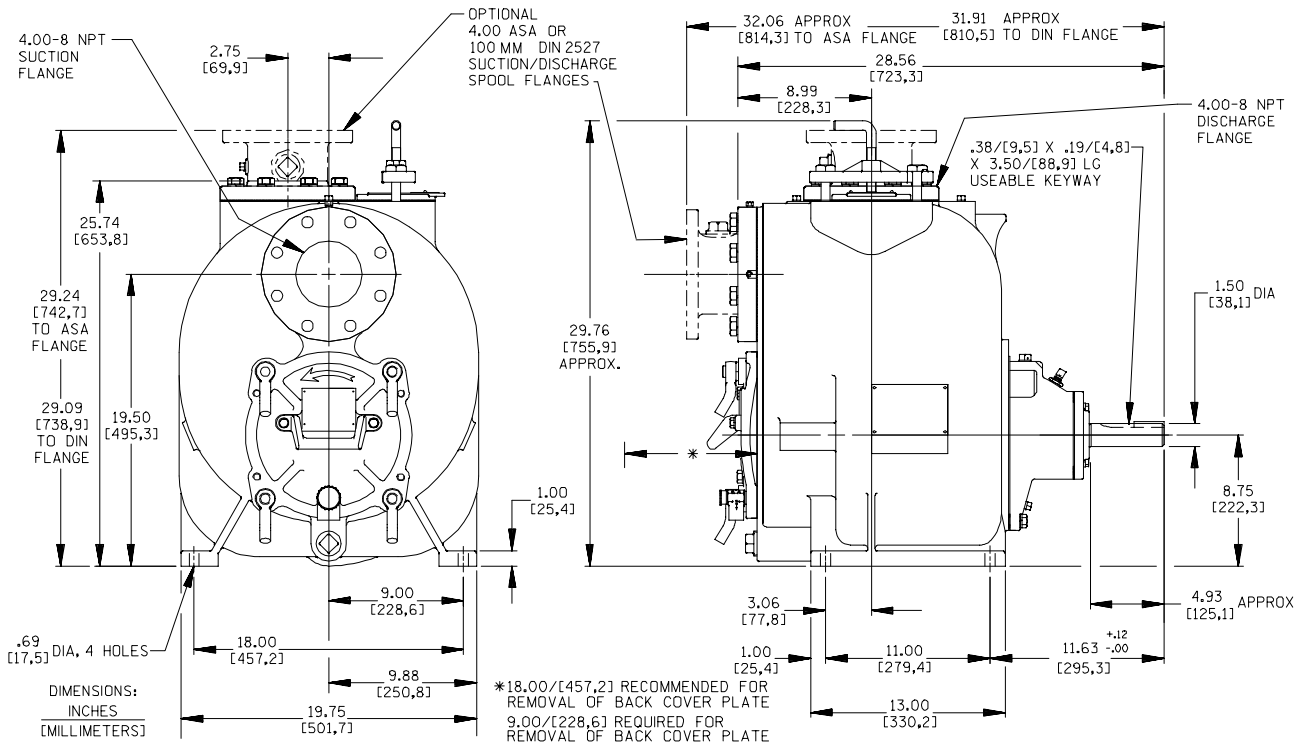
Printed in U.S.A.

Specification Data

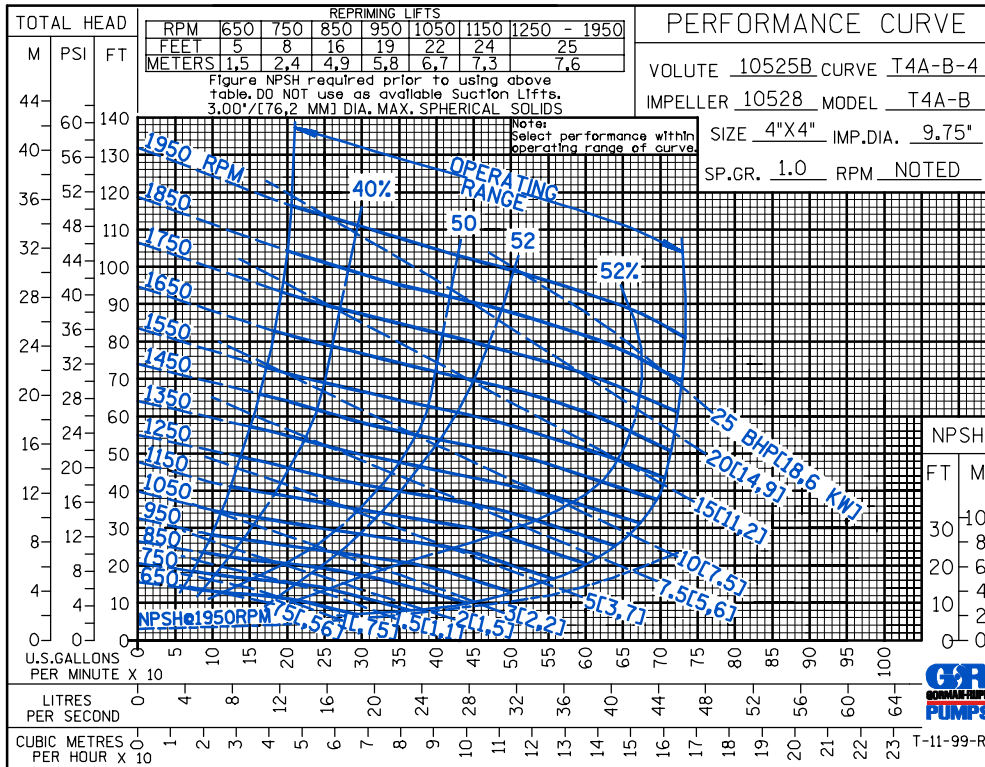
SECTION 55, PAGE 2100

APPROXIMATE DIMENSIONS and WEIGHTS

NET WEIGHT: 575 LBS. (261 KG.)*
SHIPPING WEIGHT: 614 LBS. (279 KG.)*
EXPORT CRATE: 22.7 CU. FT. (0,6 CU. M.)
***ADD 15 LBS. (6,8 KG.) W/EACH SPOOL FLANGE**



OPTIONAL ASA OR DIN STANDARD SUCTION & DISCHARGE SPOOL FLANGES AVAILABLE



THE GORMAN-RUPP COMPANY • MANSFIELD, OHIO

GORMAN-RUPP OF CANADA LIMITED • ST. THOMAS, ONTARIO, CANADA

Specifications Subject to Change Without Notice

Printed in U.S.A.